

SLIDING DOOR SYSTEMS: ASSEMBLY INSTRUCTIONS TRUE DIVIDING RAIL (S42 + AIR)

V2017.1

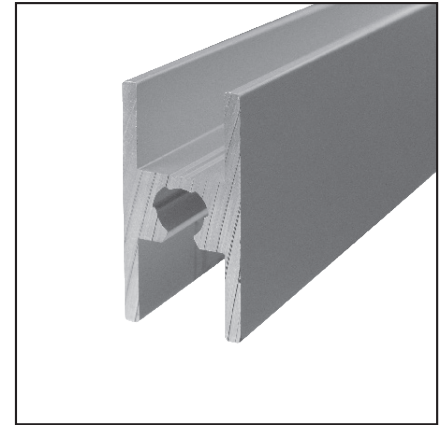
ACCESSORIES:



1_



2_



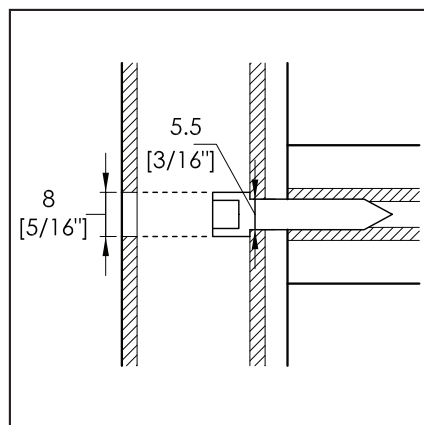
3_

- 1_ Plugs for dividing rail_ For covering the drill holes. Not needed until final assembly.
2_ Screw, 8mm diameter head _ For attaching the vertical profiles to the true dividing rail.
3_ True dividing rail_ For separating different panel materials. The open side of the screw channel must be on the underside.

ASSEMBLY INSTRUCTIONS (if not pre-drilled):



1_



2_



1_

- 1_ Pre-drill the stile with a \varnothing 5.5mm [3/16"] hole.
2_ Widen the first drill hole to \varnothing 8.0mm [5/16"] so that the screw can be counter sunk.
3_ Cover the drill holes with plugs for the dividing rail.

* Note: Frame kits are not pre-drilled