

# SLIDING DOOR SYSTEMS: ASSEMBLY INSTRUCTIONS SOLID DOOR HARDWARE (AIR)

V2017.1

# INDEX

## INDEX

General information / Tools\_ page 3  
Detail drawing\_ page 4  
Panel calculation\_ page 5  
Technical terms\_ page 6  
Preparation\_ page 7  
Assembly / Installation\_ pages 8-9  
A\_Insert top roller into top track  
B\_Installation of the top track / continuous L-bracket  
C\_Insert AIR brake with stopper into top track  
D\_frameless all-wood door  
E\_Hang door

# GENERAL INFORMATION / TOOLS

## GENERAL INFORMATION

### Preparation:

We recommend reading these instructions before starting.

Carefully unpack and check all items before beginning assembly.

When transporting assembled doors; always lift at corners and lean doors on their side – never stand them upright as this may damage the top roller.

You will find detailed descriptions of the assembly steps in the following chapters. It is

important that you follow these steps in correct order otherwise your sliding door system could be damaged.

The "HOW TO ASSEMBLE A SLIDING SOLID DOOR (AIR)" describes the process of assembling an AIR top hung system.

For other instructions, please see:

INSTALLATION INSTRUCTIONS\_AIR GANGING DEVICE

INSTALLATION INSTRUCTIONS\_AIR BRAKE

HOW TO INSTALL A SLIDING DOOR (AIR)

For additional instructions see website [www.raumplusna.com](http://www.raumplusna.com)

Technical details are subject to change

### IMPORTANT

It is assumed that you have exactly identified all cutting dimensions according to the measurement instruction for raumplus-products.

max. door weight: 60kg [130 lbs]

minimum panel thickness: 38mm [1 1/2"]

maximum panel thickness: 42mm [1 5/8"]

## TOOLS:

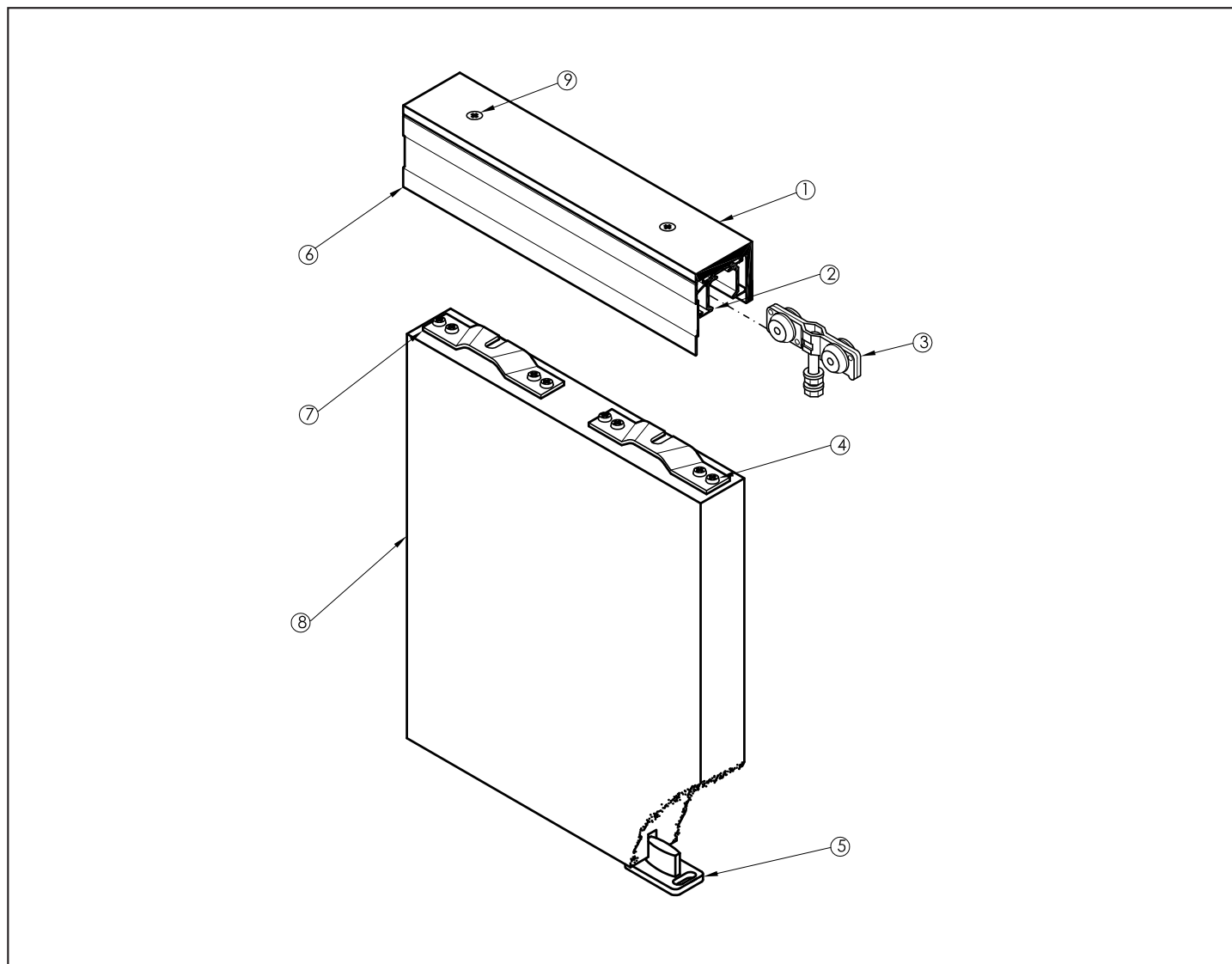
Cross tip screwdriver (Phillips)

Allen wrench

Drill

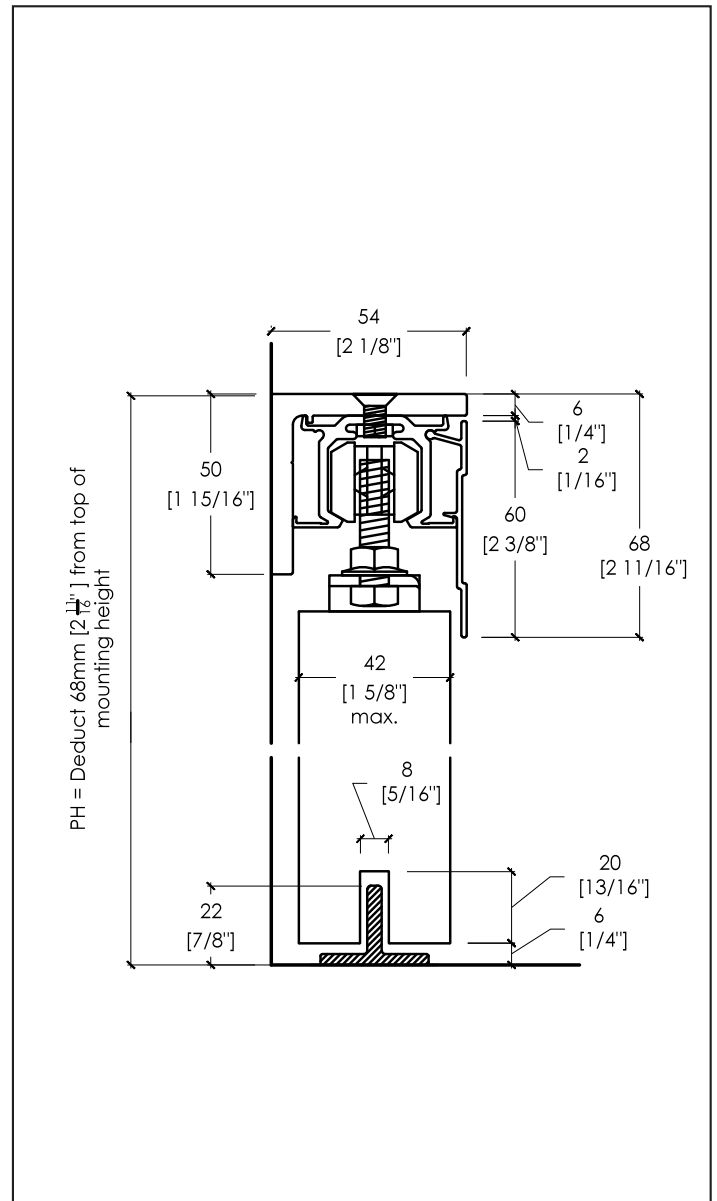
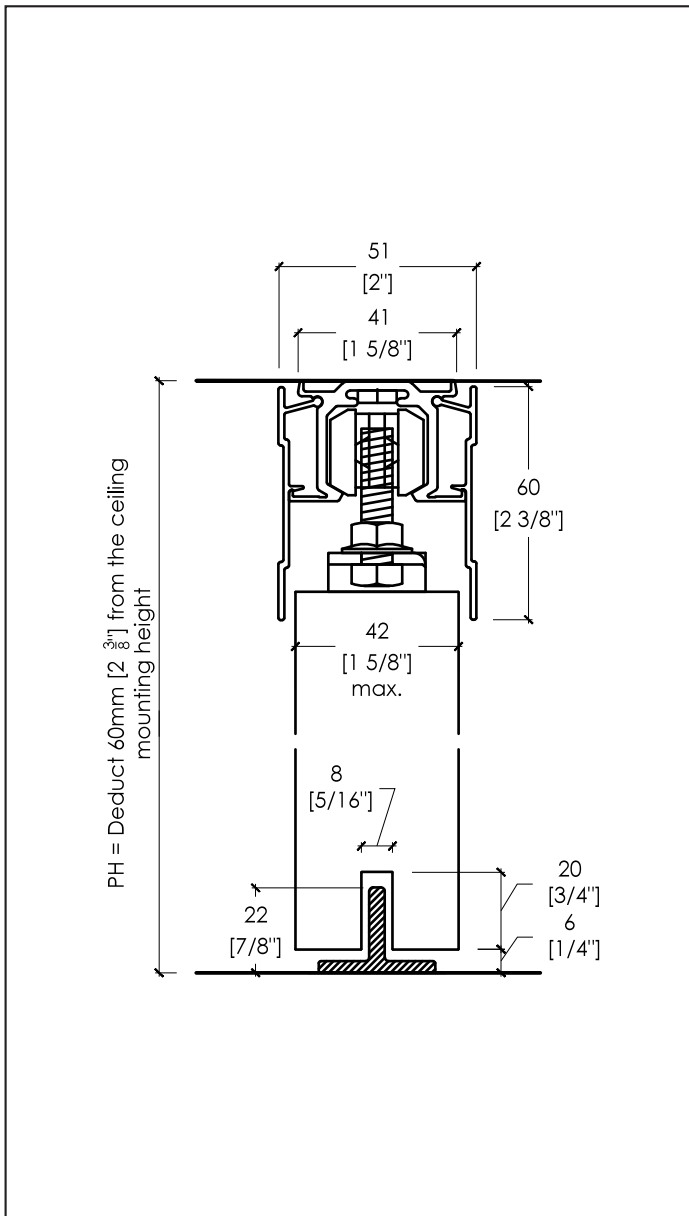
Wrench x 2

# DETAIL DRAWING



Number	Quantity	Part description
1	1 (optional)	Continous L-bracket
2	1 (varies per order)	AIR top track
3	2 (per door)	AIR top roller
4	2 (per door)	AIR attachment screws
5	1 (per door)	AIR solid door floor guide
6	1 (varies per order)	Valance
7	2 (per door)	AIR Bracket
8	1 (by others)	Panel
9	Every 4'-0"	Pre-drilled holes (mounting screws not included)

# PANEL CALCULATION



1\_CEILING-MOUNTED AIR SOLID DOOR

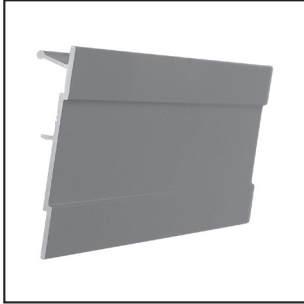
2\_WALL-MOUNTED AIR SOLID DOOR

## PANEL HEIGHT DEDUCTIONS

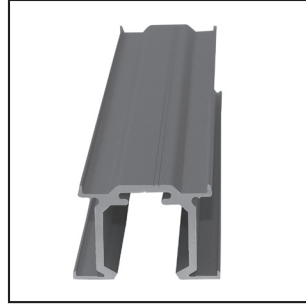
Ceiling-mounted: deduct 60mm [2 3/8"] from ceiling height

Wall-mounted: deduct 68mm [2 11/16"] from top of wall bracket

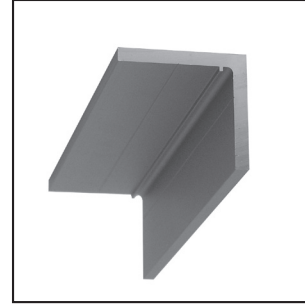
# TECHNICAL TERMS



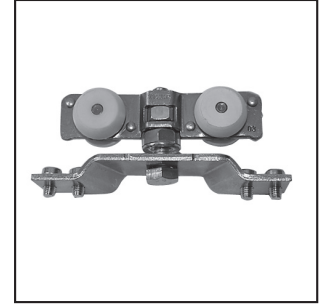
1\_



2\_



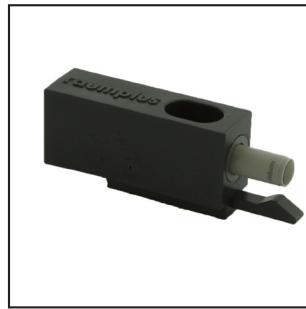
3\_



4\_



5\_



6\_



7\_



8\_



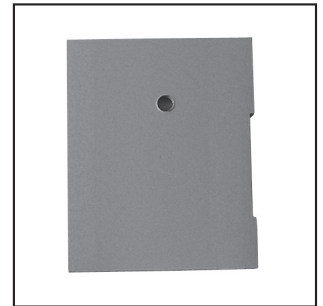
9\_



10\_



11\_



12\_

1\_Valance\_ use on one or both sides of AIR top track.

2\_AIR Top track\_ ceiling or wall-mount (add continous L-bracket if wall-mounted).

3\_Continous L-bracket\_ mounted to the wall and holds the AIR track.

4\_AIR Top roller and bracket\_ pushed into the AIR track.

5\_AIR Brake\_ used between top rollers to slow doors in tracks (optional).

6\_AIR Stopper with brake\_ used to stop door when moved to the open and closed position.

7\_AIR Bottom guide\_ is used to guide the door.

8\_Screw for continous L-bracket\_ to affix the top track to the continous L-bracket.

9\_Nut for continous L-bracket\_ to affix the insert profile AIR at the wall connection profile.

10\_Connector for AIR end cap\_ fasten the connector to the end cap and mount to the top track.

11\_AIR End cap for/ceiling mounted\_ for ceiling mounted tracks, can be used with single or double valance.

12\_AIR End cap for/wall mounted\_ wall-mount shown, specify right or left. Also available ceiling-mounted.

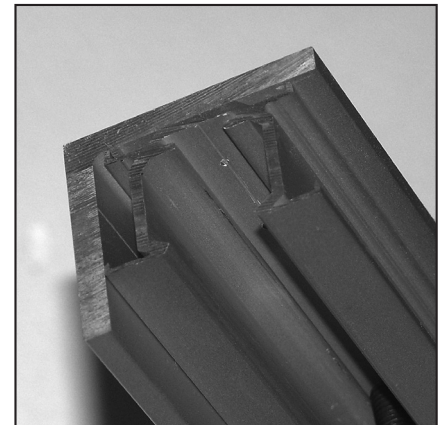
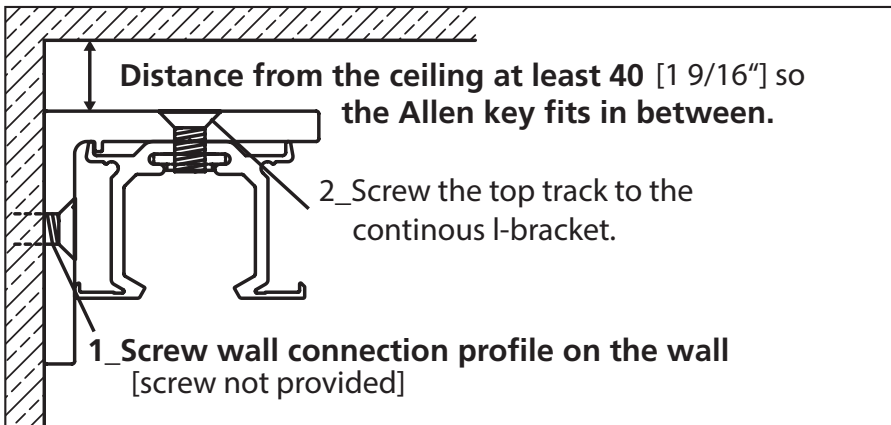
# PREPARATION

## A\_INSERT TOP ROLLER INTO TOP TRACK:



Push the upper parts of the top rollers, which you have previously disassembled into the top track. In case the top track is to be installed from wall to wall, please make sure that you push in both top rollers, the brake between the rollers as well as the stoppers before installation into the top track.

## B\_INSTALLATION OF TOP TRACK / CONTINUOUS L-BRACKET:

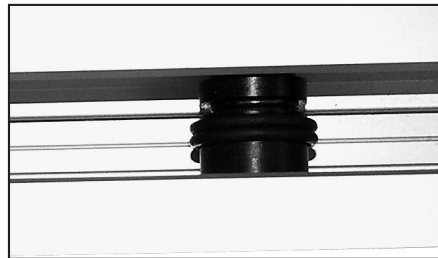
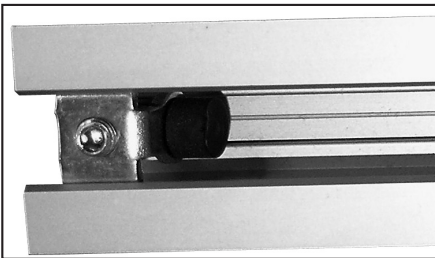
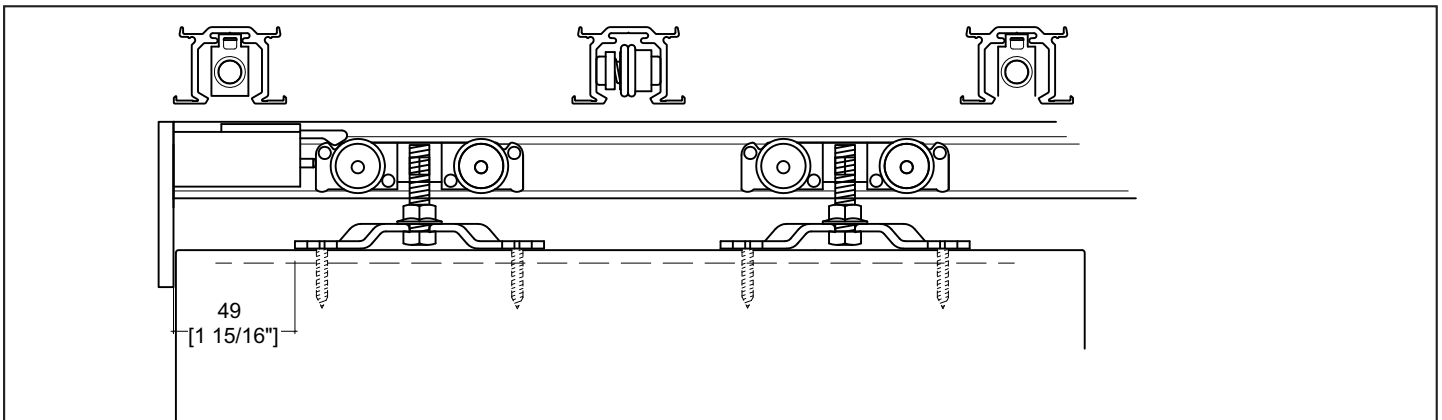


Before fastening the top track to the wall continuous L-bracket, you have to pre-drill holes. It is important to mount the continuous L-bracket on the wall with a sufficient distance from the ceiling (at least 40 mm [1 9/16"]). Drill holes in regular distances (minimum distance of 40 to 50 cm [15 3/4" - 19 11/16"]) between drill holes) into the wall continuous L-bracket and countersink the outside of the top drill holes. Now drill holes into the top track with the same distances. First, mount the wall continuous L-bracket to the wall and then the top track to the continuous L-bracket or mount the top track directly to the ceiling. When you install the continuous L-bracket have the screw heads in top and the nut.

Please note: The stability is dependent upon the quantity type and correct use of appropriate fasteners. There may be problems with the attachment to a suspended ceiling.

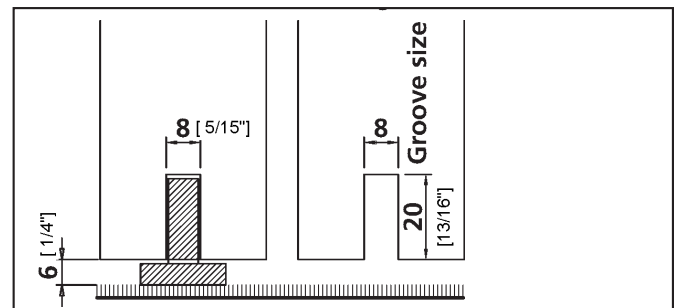
# ASSEMBLY / INSTALLATION

## C\_INSERT AIR BRAKE WITH STOPPER INTO THE TOP TRACK



Install stopper and the brake for top roller in the insert profile as indicated above (it is to be put into correct position after having installing the doors). Note: The brake for top roller has to be positioned between both top roller of one door element.

## D\_FRAMELESS WOOD DOOR:



1\_

2\_



1\_The top roller has to be screwed directly onto the wood door.

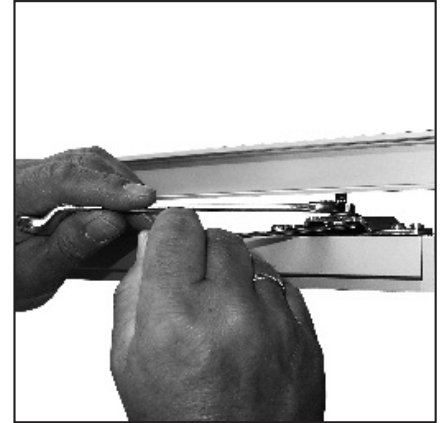
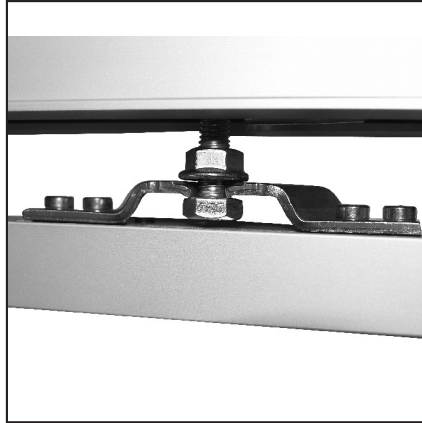
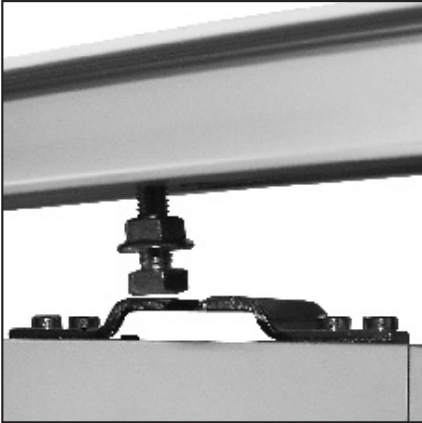
2\_A groove has to be milled into the bottom of the door in order to guide the door through the bottom guiding which is mounted on the floor (see above drawing).

Please take the correct measurements from the detail drawing. Lastly, you have to adjust the door.



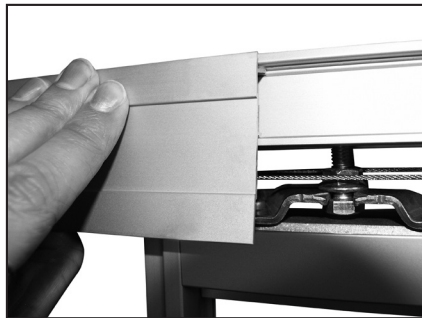
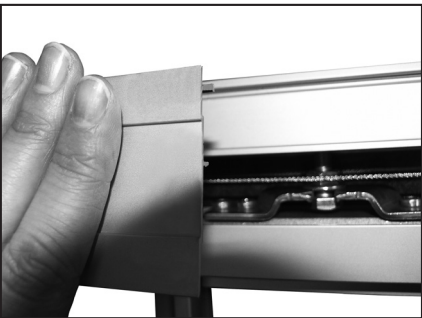
# ASSEMBLY / INSTALLATION

## E\_HANG DOOR AND ADJUST HEIGHT:



Hang the door, then tighten the bolt and nut with the help of two wrenches 13 mm [1/2"]. To adjust height turn the bolt accordingly.

## F\_INSTALL VALANCE:



Snap the valance onto the top track. Valance should fit snug against the top track.